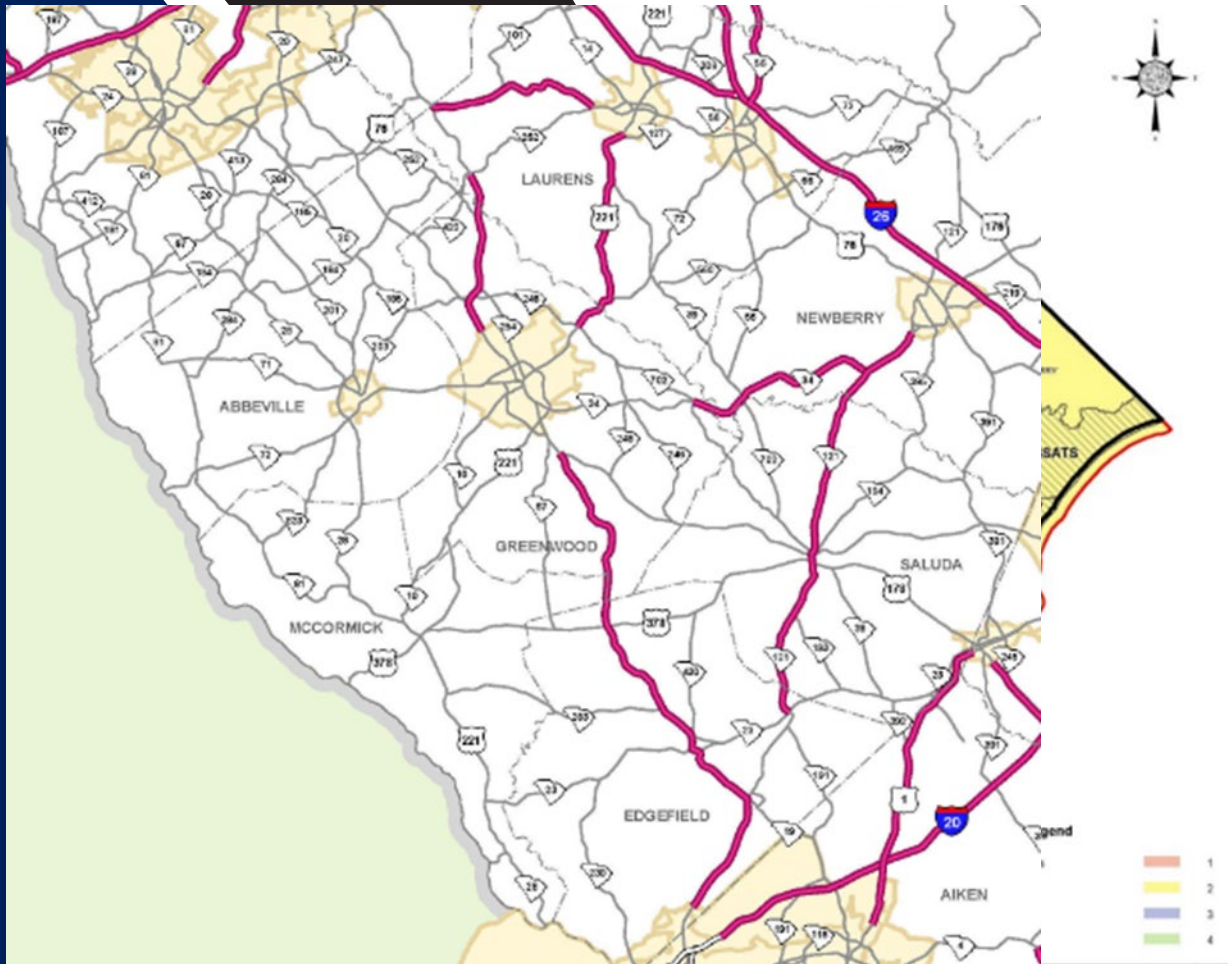
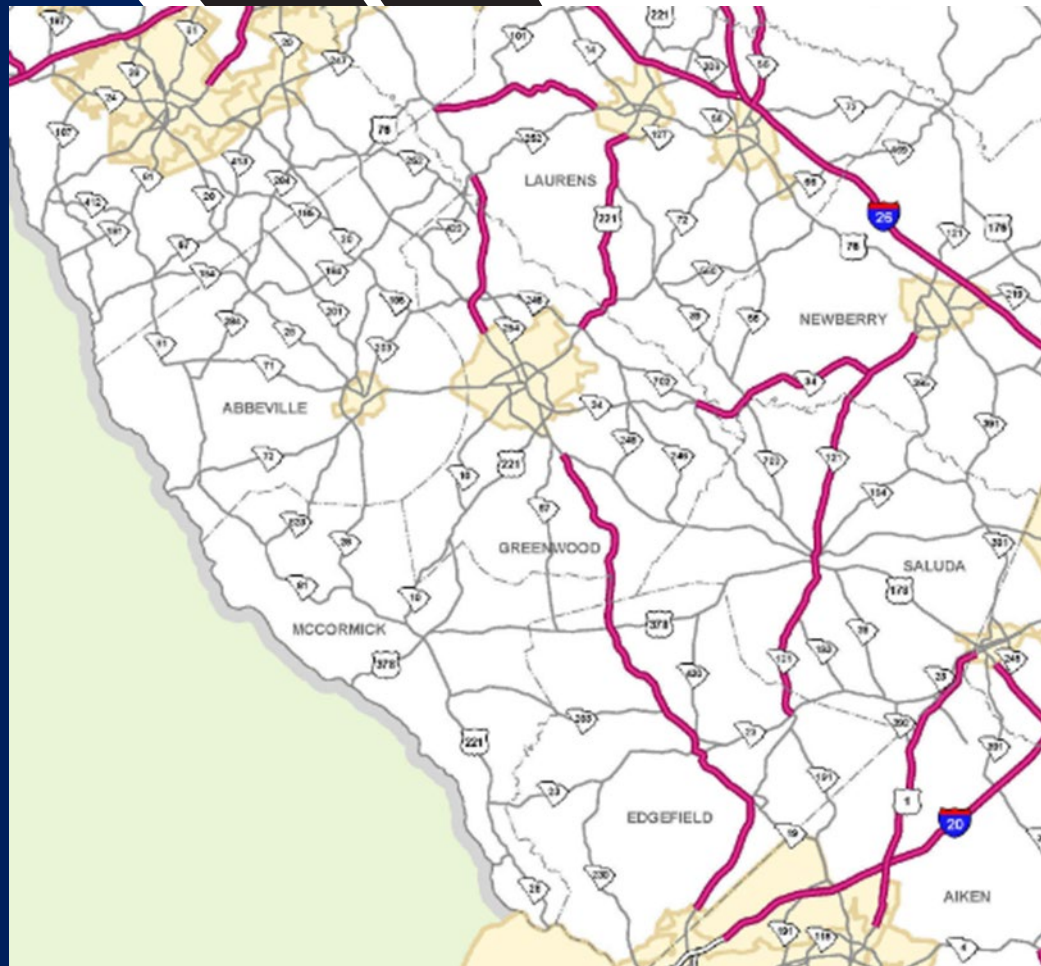


# Roadway Departure Safety in South Carolina



- FHWA identified South Carolina as a Rwd focus state based on 2014-2019 FARS data
- To combat Rwd fatalities and serious injuries on all roads
  - Engage USCOG to develop RwdSIP
  - Serve as a model for other regional planning organizations
- South Carolina
  - Approximately 1,050 annual fatalities
  - Roadway departures 55%
- Upper Savannah
  - Approximately 57 annual fatalities
  - Roadway departures 70%

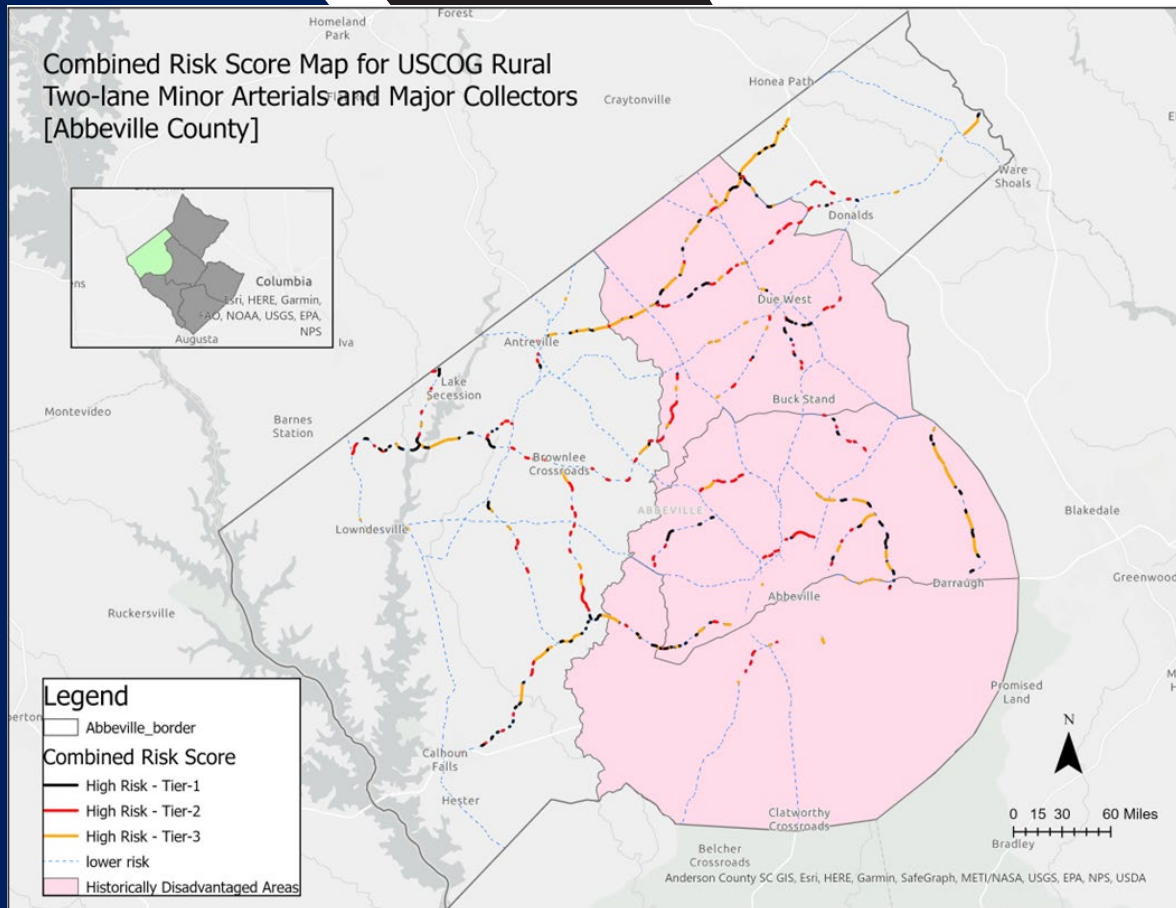
# Roadway Departure Safety in South Carolina



- South Carolina
  - Approximately 1,050 annual fatalities
  - Roadway departures 55 percent
- Upper Savannah
  - Approximately 57 annual fatalities
  - Roadway departures 70 percent
- Roadway departure emphasis in SHSP
  - Rural Road Safety Program
  - Focuses on identifying higher crash locations

# USCOG Roadway Departure Safety Implementation Plan

Uses systemic safety approach



- Establishes focus crash and facility types
- Assesses risk factors for severe outcomes
- Applies risk factors to identify priority locations
- Incorporates information on historically disadvantaged areas and historic crash experience
- Recommends low-cost countermeasures for prioritized deployment
- Provides an action plan for addressing RWD safety on USCOG priority segments



# Thank You

Scott Himes  
[shimes@vhb.com](mailto:shimes@vhb.com)

Paul LaFleur  
[Paul.LaFleur@dot.gov](mailto:Paul.LaFleur@dot.gov)



U.S. Department  
of Transportation  
**Federal Highway  
Administration**

